

# **RC-808-PLG Installation Manual**

Cubase (for Windows)

# 1 . First of all

RC-808-PLG is a plugin to add RC-808 (TR-808 emulator) function to your DAW (Digital Audio WorkStation).

This document describes the installation procedure for Cubase running on Windows.

## 2. Cubase plugin installation procedure

1. If Cubase is running, exit it.

2. Open the download page from **<https://rc-808.com>**

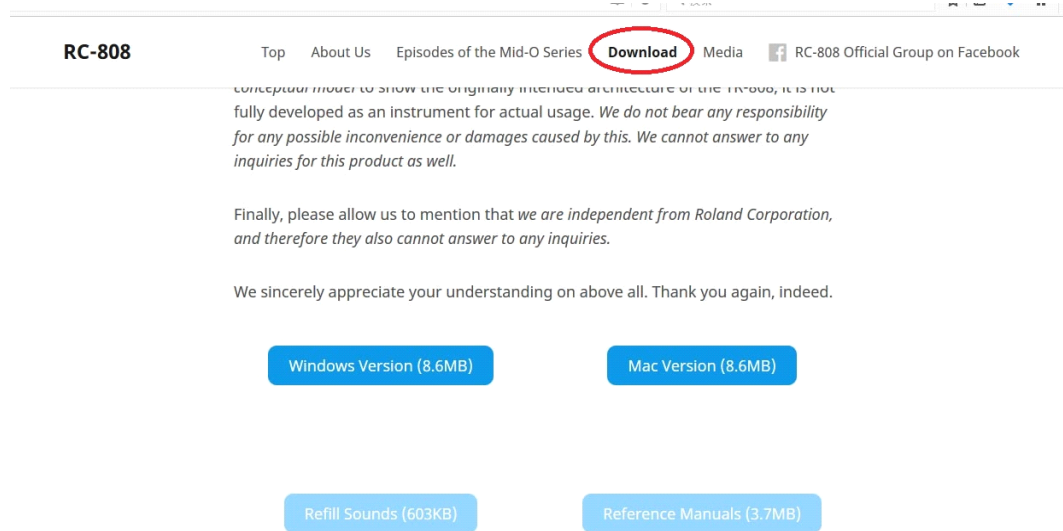


Figure 1

Click "Windows Version" or "Mac Version" according to the operationg system you work with.

3. Use Explorer to copy the downloaded ZIP file to any folder and decompress it.

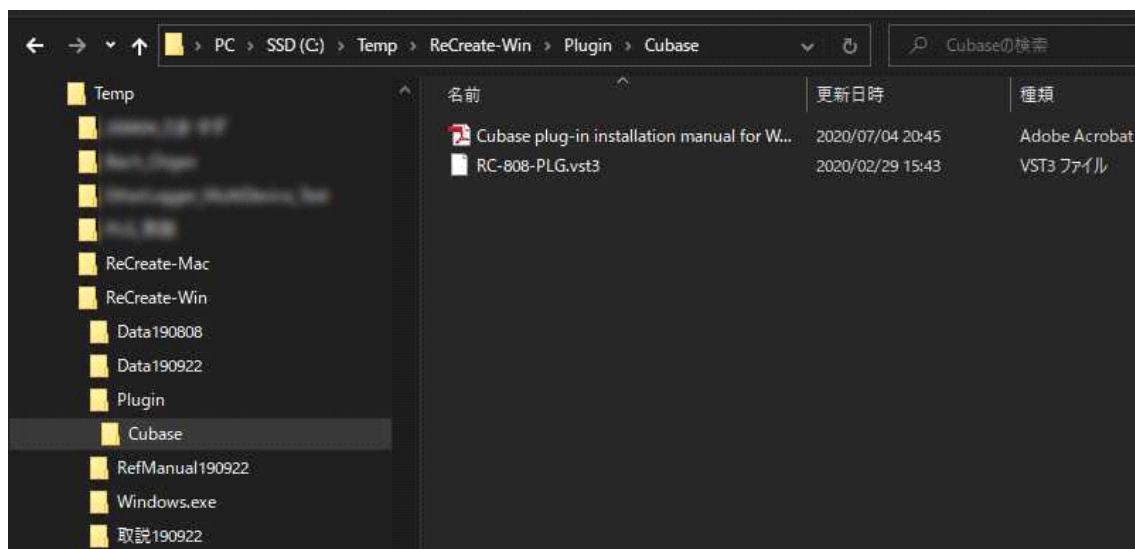


Figure 2

4. Move the plug-in file.

Start Explorer and move the downloaded RC-808-PLG.vst3 file to

"Program Files" > "Common Files" > "VST3"

If this folder does not exist, right click to create it.

At this time, the administrator password may be required.

In that case, enter the administrator password.

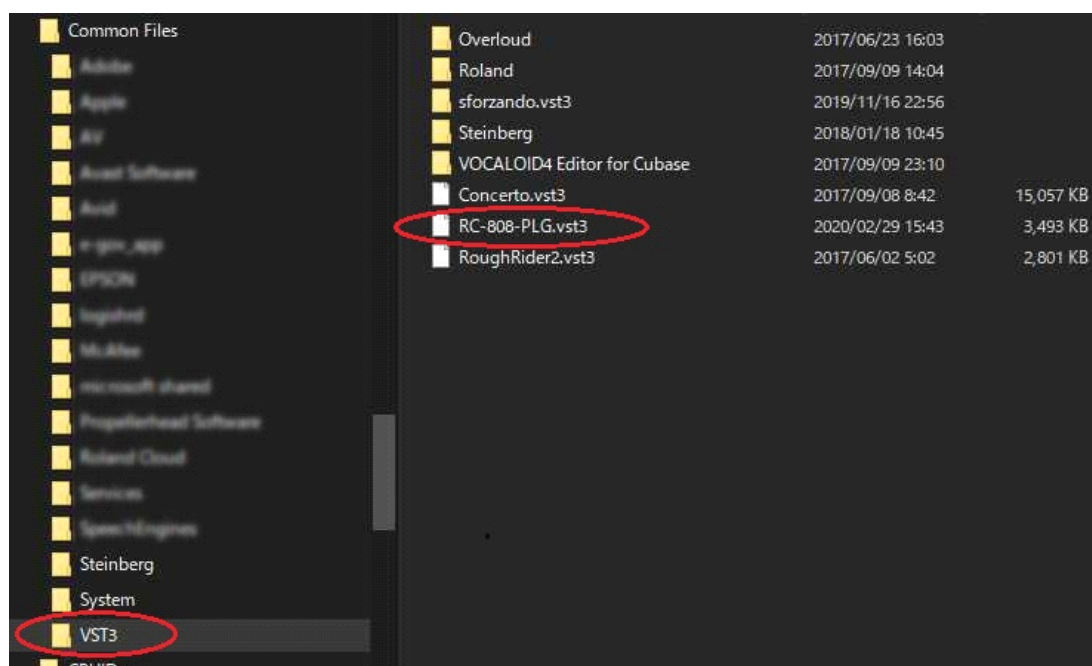


Figure 3

5. Start Cubase newly.

Import an existing project or create a new project.

From Cubase's "Project" menu, click "Add Track"> "Instrument"

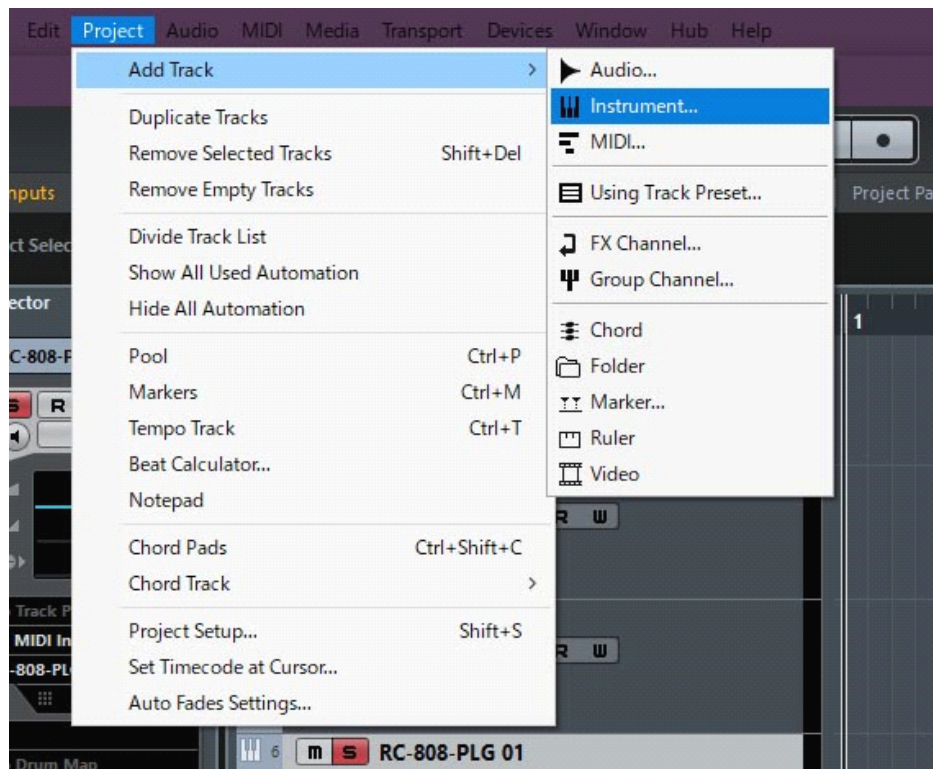


Figure 4

From the Synth category in the "Add Instrument Track" dialog:

Select "RC-808-PLG".

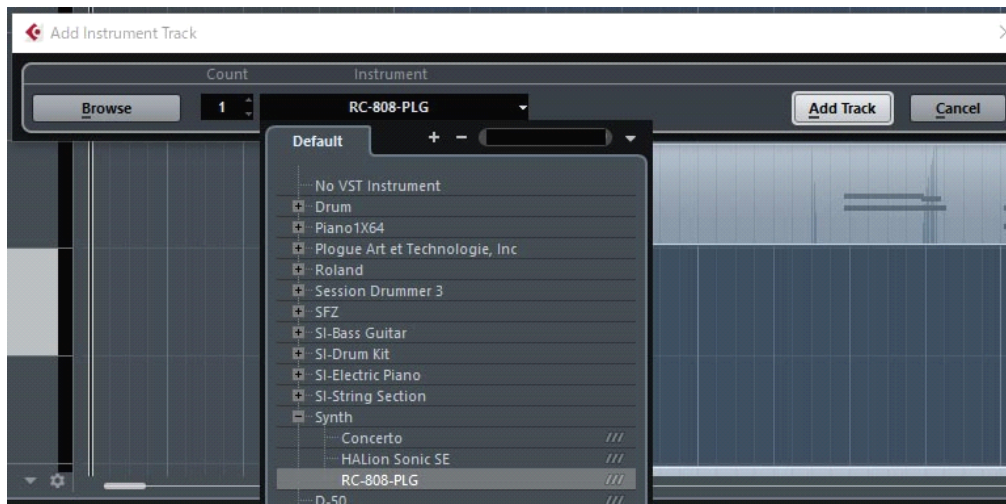


Figure 5

Click the "Add Track" button to add the RC-808-PLG track, the RC-808-PLG panel is called.

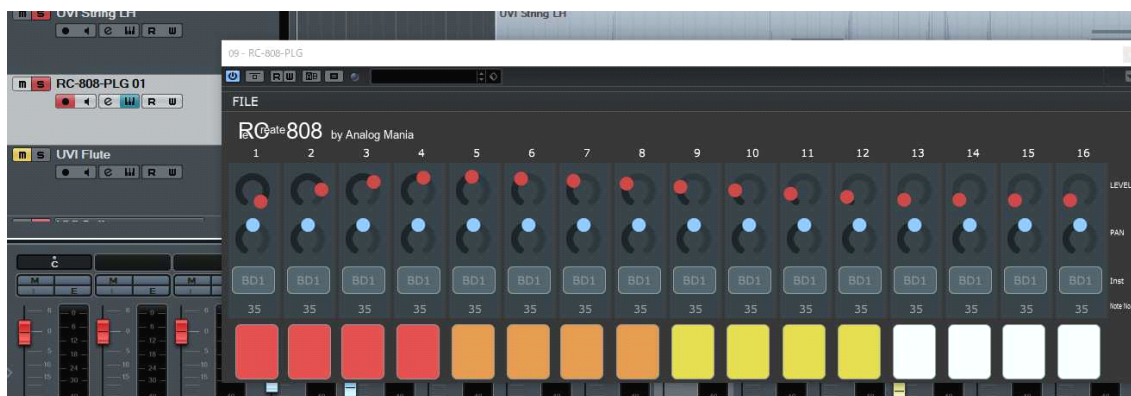


Figure 6

6. Load a parameter file for RC-808 tone synthesis.

Click "FILE" > "Import" on the upper left of the RC-808-PLG panel to open the settings file (.allprm)



Figure 7

There are 1 allprm file and 16 prm files in the folder.

This parameter can be edited in the same way as RC-808 (emulator of TR-808)  
(Refer to the RC-808 instruction manual).

Edited parameters can be saved from the “Preset” button in Figure 7.

#### 7. How to check if Cubase recognizes RC-808-PLG correctly

When you click "VST Plugin Manager" from the "Studio" menu,

The "VST Plugin Manager" dialog will be launched.

If the RC-808-PLG is displayed in the "VST Instruments" tab, it is recognized.

If it is not shown here, click the "Rescan All" button at the bottom left.

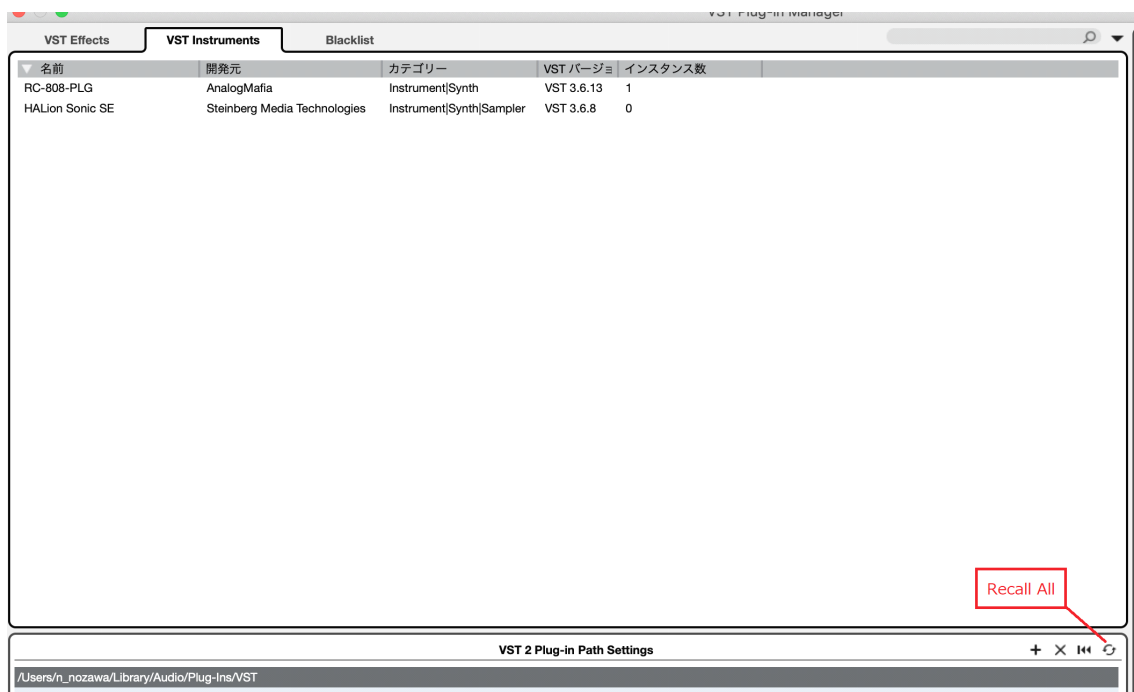


Figure 8

### 3. Cubase Plugin uninstall procedure

1. Start Explorer.

In the "Program Files"> "Steinburg"> "VSTPlugins" folder

Delete RC-808-PLG.vst3.

**Copyright(C) 2020 by Analog Mania.**  
**All trademarks belong to their respective owners.**